



Winter  
in Albiez

# Skiing, Snowboarding & Biathlon

## COURS DE SKI AVEC L'ESF

97 Chemin de la Rua, Chef-lieu - 73300 Albiez-Montrond



### Sporting activities

Whether you're a beginner, an experienced skier, an amateur or a competitor... Whatever your age or level, whether you want to learn or improve, the ESF is here to offer you the right course for your skiing.

☎ 04 79 59 31 80 | 04 79 59 31 77  
contact@esfalbiez.fr  
[www.esfalbiez.fr/](http://www.esfalbiez.fr/)

From 21/12 to 23/03, daily.

## COURS DE SKI ENFANT AVEC L'ESF - CLUB PLOU PLOU

97 Chemin de la Rua, Chef-lieu - 73300 Albiez-Montrond



### Sporting activities

Attentive to your children's needs, our instructors provide a fun way to discover the joys of snow, skiing and sliding. In a secure area with conveyor belt and snow line, everything is organized to make skiing feel like a pleasure and a game.

Child : 165 €

☎ 04 79 59 31 80 | 04 79 59 31 77  
contact@esfalbiez.fr  
[www.esfalbiez.fr/](http://www.esfalbiez.fr/)

From 21/12 to 23/03, daily. Classes run from Sunday to Friday.

## COURS DE SKI AVEC L'ESF - FORMULE SCHUSS

97 Chemin de la Rua, Chef-lieu - 73300 Albiez-Montrond



### Sporting activities

The Schuss package from ESF Chef-lieu and Centre de loisirs le Petit Montagnard is: 2h group ski lessons + 2h childcare. It's the ideal solution for children who like their vacations sporty, fun and... with other children!

Child : 280 €

☎ 04 79 59 31 77 | 04 79 59 31 80  
contact@esfalbiez.fr  
[www.esfalbiez.fr/](http://www.esfalbiez.fr/)

From 21/12 to 23/03, daily. Classes run from Sunday to Friday.

## COURS DE SKI AVEC L'ESF - TEAM COMPET'

185 Rue du Ravarin, Le Mollard - 73300 Albiez-Montrond



### Sporting activities

If you're already 10 years old and have a minimum Gold Star level in downhill skiing, the ESF offers you 4 days of intensive group technical training to prepare you for the arrow test on day 5.

One price : 165 €

☎ 04 79 59 31 80 | 04 79 59 31 77  
contact@esfalbiez.fr  
[www.esfalbiez.fr/](http://www.esfalbiez.fr/)

From 08/02 to 09/03, daily between 11 am and 1 pm. Classes run from Monday to Friday. From 21/12 to 05/01, daily between 10 am and 12 pm. Classes run from Monday to Friday.

## COURS DE SKI AVEC L'ESF - TEAM RIDER

185 Rue du Ravarin, Le Mollard - 73300 Albiez-Montrond



### Sporting activities

If you already have a good level of skiing (gold star confirmed), if you want to have fun with the gang, discover freestyle and train to pass the arrow... Then join the Team Rider for fun, stylish and fast skiing under supervision, in complete safety.

Teenager : 165 €

☎ 04 79 59 31 80 | 04 79 59 31 77  
contact@esfalbiez.fr  
[www.esfalbiez.fr/](http://www.esfalbiez.fr/)

From 17/02 to 28/02, daily between 3 pm and 5 pm. Classes run from Monday to Friday. From 21/12 to 03/01, daily between 2 pm and 4 pm. Classes run from Monday to Friday.

## SAMEDI CAP'AU SKI AVEC L'ESF

185 Rue du Ravarin, Le Mollard - 73300 Albiez-Montrond



### Sporting activities

Are you from the area and want to ski regularly? Our instructors offer you our Cap'au ski formula. Join your friends for 6 Saturdays of skiing, in groups of different levels, with a picnic break together, before getting your medal.

Child : 260 €

☎ 04 79 59 31 80 | 04 79 59 31 77  
contact@esfalbiez.fr  
[www.esfalbiez.fr/](http://www.esfalbiez.fr/)

From 11/01 to 15/03, daily between 10.30 am and 3.30 pm. Saturday January 11, 18 and 23, February 1, March 8 and 15.



### LEÇON DE SKI AVEC VALENTIN JULLIEN 73300 Albiez-Montrond



#### Sporting activities

Come and discover or perfect your skiing with Valentin Jullien, a qualified independent ski instructor. Whatever your age or level, he'll help you progress on the slopes of Albiez or elsewhere in the Maurienne. Come and meet him!

Full price : 50€/hour

☎ 06 18 09 24 18

From 21/12 to 30/03, daily. On demand.

### SORTIE SKI HORS PISTE AVEC VALENTIN JULLIEN 73300 Albiez-Montrond



#### Sporting activities

Discover the Albiez, Les Sybelles, Les Karellis and other Maurienne slopes off-piste with Valentin Jullien, a qualified freelance ski instructor.

☎ 06 18 09 24 18

From 21/12 to 30/03, daily. On demand.

### COURS DE SNOWBOARD AVEC L'ESF 185 Rue du Ravarin, Le Mollard - 73300 Albiez-Montrond



#### Sporting activities

Beginner, advanced, amateur, competitor... From age 9 upwards and whatever your level, whether you want to learn or improve, the ESF is there to offer you the right course for your snowboarding needs.

One price : 170 €

☎ 04 79 59 31 80 | 04 79 59 31 77  
contact@esfalbiez.fr  
[www.esfalbiez.fr/](http://www.esfalbiez.fr/)

From 09/02 to 09/03, daily between 1 pm and 3 pm. Classes run from Sunday to Friday. From 21/12 to 05/01, daily between 2 pm and 4 pm. Classes run from Sunday to Friday.

### COURS DE SNOWBOARD AVEC L'ESF - INITIATION 185 Rue du Ravarin, Le Mollard - 73300 Albiez-Montrond



#### Sporting activities

Want to discover snowboarding? In 2 hours, this weekend group initiation will give you a first contact with this discipline and first sensations.

One price : 45 €

☎ 04 79 59 31 77 | 04 79 59 31 80  
contact@esfalbiez.fr  
[www.esfalbiez.fr/](http://www.esfalbiez.fr/)

From 21/12 to 23/03, every Friday. On demand.

### LEÇON DE SNOWBOARD AVEC VALENTIN JULLIEN 73300 Albiez-Montrond



#### Sporting activities

Come and discover or perfect your snowboarding with Valentin Jullien, a qualified independent ski and snowboard instructor. Whatever your age or level, discover or perfect your snowboarding skills in Albiez or elsewhere in the Maurienne...

Full price : 50€/hour

☎ 06 18 09 24 18

From 21/12 to 30/03, daily. On demand.

### BIATHLON AVEC L'ESF - INITIATION 97 Chemin de la Rua, Chef-lieu - 73300 Albiez-Montrond



#### Sporting activities

With family or friends, in small groups of four or more, come and discover biathlon and test your skills after a physical effort. Calmness and endurance will be your watchwords. Session length varies according to participants.

One price : 14 €

☎ 04 79 59 31 77  
contact@esfalbiez.fr  
[www.esfalbiez.fr/](http://www.esfalbiez.fr/)

From 21/12 to 23/03, daily. On demand.

## The ski area provides you with real-time updates !

### Download the app Mountain Live

Add Albiez to your favorites  
and turn on your notifications !



# Cycling, Scootering, Snowmobiling & New Sliding Sport

## DISTRIBUTEUR DE SNOOCS

260 Route d'Albiez-le-Jeune, Chef-lieu - 73300 Albiez-Montrond



### Shops

This winter, discover snooc in Albiez! To get started, download the snooc Go App, and, at the foot of the Grand Loup chairlift, borrow a snooc from the dispenser, take a chairlift, hurtle down the slopes, climb back up, glide, enjoy... Then, put the snooc back on!

One price : 1.5 €



04 79 59 30 48  
albiez@montagnicimes.com  
<https://snooc.ski/>

From 21/12 to 23/03. When the slopes are open.

## SOIRÉE INUIT EN IGLOO

125 Rue du Ravarin, Le Mollard - 73300 Albiez-Montrond



### Sporting activities

Discover the ski area on a sleigh pulled by a snowmobile on a dedicated trail. Then enjoy an evening stroll through the woods to the secret igloo, where you can enjoy an aperitif and local produce.

Adult : 49 €  
Child : 39 €



07 86 34 42 12 | 07 88 43 96 96  
mustangalbiez1650@gmail.com  
<https://mustangsport.lokki.rent/>

From 21/12 to 23/03, daily. 2 sessions / evening: 6:30-8pm and 8:30-10pm.

## SOIRÉE ESKIMO - MOTONEIGE ET RESTO

47 Route du Mollard, Chef-Lieu - 73300 Albiez-Montrond



### Sporting activities

Join us for an unusual evening of snowmobiling and Savoyard gastronomy! Learn to drive a snowmobile for an hour on a dedicated course, then warm up with a delicious Savoyard menu.



07 88 43 96 96 | 07 86 34 42 12  
mustangalbiez@gmail.com  
<https://mustangsport.lokki.rent/>

From 21/12 to 23/03, every Thursday between 7 pm and 10 pm.

## CONDUITE DE MOTONEIGE

125 Rue du Ravarin, Le Mollard - 73300 Albiez-Montrond



### Sporting activities

Step into the shoes of an Eskimo and learn to drive a snowmobile on a dedicated 4-hectare course! Accessible to all, an unforgettable experience with the Aiguilles d'Arves to share with family and friends!

Adult : 25 €  
Child : 10 €



07 86 34 42 12 | 07 88 43 96 96  
mustangalbiez@gmail.com  
<https://mustangsport.lokki.rent/>

From 21/12 to 23/03, daily. Baptisms start at 5:30pm. Departure times: 6pm - 7pm - 8pm - 9pm - 10pm.

## LOCATION TROTTINETTE TOUT TERRAIN ÉLECTRIQUE

Résidence Les Vernataux, Route du Ravarin, Le Mollard - 73300 Albiez-Montrond



### Sporting activities

Looking for an après-ski activity to share with family and friends? Take a free ride on an electric all-terrain scooter to discover our magnificent resort-village and its surroundings.

One price : 35 €



07 86 34 42 12 | 07 88 43 96 96  
mustangalbiez1650@gmail.com  
<https://mustangsport.lokki.rent/>

From 21/12 to 23/03, daily between 5.30 pm and 6.30 pm. On demand.

## SORTIE EN TROTTINETTE TOUT TERRAIN ÉLECTRIQUE

Résidence Les Vernataux, Route du Ravarin, Le Mollard - 73300 Albiez-Montrond



### Sporting activities

Discover the magnificent resort-village of Albiez on an electric all-terrain scooter! A one-hour outing through narrow streets and snow-covered paths, with the sun setting over Mont Emy and the Aiguilles d'Arves!

One price : 49 €



07 86 34 42 12 | 07 88 43 96 96  
mustangalbiez1650@gmail.com  
<https://mustangsport.lokki.rent/>

From 21/12 to 23/03, daily. On demand.



### RANDONNÉE EN VTAE ET TRAITE DES VACHES

47 Route du Mollard, Chef-lieu - 73300 Albiez-Montrond



#### Sporting activities

Accompanied by a qualified instructor, set off in the evening on your ATV to meet a farmer and his cows! After a walk in the forest, you'll arrive on time to: test your milking skills and share an aperitif featuring local produce.

Adult : 80 €

Child : 70 €



07 88 43 96 96 | 07 86 34 42 12

mustangalbiez@gmail.com

<https://mustangsport.lokki.rent/>

From 01/12 to 30/03, daily between 4 pm and 6.30 pm. On demand.

### SORTIE VTAE ET DESCENTE SUR PISTES DE SKI

47 Route du Mollard, Chef-lieu - 73300 Albiez-Montrond



#### Sporting activities

Enjoy a unique experience in Albiez accompanied by your MCF instructor. After a short VAE ride to warm up, you'll take the last chairlift up, enjoy the sunset over the Aiguilles d'Arves, and then hit the slopes!

Adult : 80 €

Teenager : 70 €



07 88 43 96 96 | 07 86 34 42 12

mustangalbiez@gmail.com

<https://mustangsport.lokki.rent/>

From 21/12 to 23/03, every Thursday between 4 pm and 6.30 pm.

### SORTIE ENCADRÉE VTT ENDURO & SHUTTLE

47 Route du Mollard, Chef-lieu - 73300 Albiez-Montrond



#### Sporting activities

Discover the whole of Albiez from the ski slopes to the mountain bike trails with a qualified instructor. You'll be taken by shuttle to the starting points, and all you have to do is enjoy 70 kms of marked trails with expert advice.

Full price : 100 €



07 88 43 96 96 | 07 86 34 42 12

mustangalbiez@gmail.com

<https://mustangsport.lokki.rent/>

From 21/12 to 23/03, every Thursday between 12 pm and 3 pm. On demand.

### SORTIE FAT BIKE ACCOMPAGNÉE

97 Chemin de la Rua, Chef-lieu - 73300 Albiez-Montrond



#### Sporting activities

Still have some energy left after skiing? At nightfall, join qualified instructor Arnaud for an electric fat bike outing on the Albiez trails for a new, exhilarating sporting experience.

One price : 39 €



06 35 47 43 52

arnaud.rota@hotmail.fr

From 21/12 to 23/03, daily between 5.30 pm and 7 pm.

### SORTIE VTT SUR NEIGE

73300 Albiez-Montrond



#### Sporting activities

Fancy trying out a new sport? Come and discover the joys and sensations of downhill mountain biking on snow with Ludovic, a qualified independent cycling instructor.



06 13 84 52 77

arvanvtt@gmail.com

From 21/12 to 23/03, daily.

## The event agenda

### New !

Online event agenda and registration



Or go to the tourist office.

# Ski Touring & Mountain Safety

## INITIATION SKI DE RANDONNÉE AVEC L'ESF

185 Rue du Ravarin, Le Mollard - 73300 Albiez-Montrond



### Sporting activities

Would you like to get off the beaten track and try ski touring? This introductory course will teach you how to put on your boots and use your equipment to tackle snow-covered slopes in complete safety, both on the way up and on the way down.

One price : 80 €

☎ 04 79 59 31 77 ☎ 04 79 59 31 80  
contact@esfalbiez.fr  
[www.esfalbiez.fr/](http://www.esfalbiez.fr/)

From 21/12 to 23/03, daily between 3 pm and 5 pm. On demand.

## SORTIE SKI DE RANDONNÉE À LA CARTE AVEC L'ESF

185 Rue du Ravarin, Le Mollard - 73300 Albiez-Montrond



### Sporting activities

If you know how to ski and would like to discover a wilder landscape, put on your touring skis and let one of our instructors guide you... A la carte itineraries depending on weather conditions and your ski level.

☎ 04 79 59 31 77 ☎ 04 79 59 31 80  
contact@esfalbiez.fr  
[www.esfalbiez.fr/](http://www.esfalbiez.fr/)

From 21/12 to 23/03, daily between 3 pm and 6 pm. Subject to snow conditions. On demand.

## INITIATION AU DETECTEUR VICTIME AVALANCHE (DVA) AVEC L'ESF

185 Rue du Ravarin, Le Mollard - 73300 Albiez-Montrond



### Sporting activities

Come and learn the right moves and reflexes to deal with the dangers of the mountains! This introductory session will provide you with the basics you need to move more safely and serenely off-piste! Session length varies according to participants.

One price : 14 €

☎ 04 79 59 31 80 ☎ 04 79 59 31 77  
contact@esfalbiez.fr  
[www.esfalbiez.fr/](http://www.esfalbiez.fr/)

From 21/12 to 23/03, every Wednesday, Thursday and Friday at 5.30 pm. On demand.

## LEÇON DE SKI DE RANDONNÉE AVEC VALENTIN JULLIEN

73300 Albiez-Montrond



### Sporting activities

Valentin Jullien, independent ski instructor, offers you the chance to discover or practice ski touring by the day, for groups of up to 5 people, in Albiez, Les Sybelles, Les Karellis or elsewhere in the Maurienne on request.

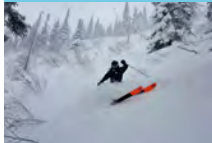
Full price : 500 €

☎ 06 18 09 24 18

From 21/12 to 30/03, daily. On demand.

## SORTIE FREERIDE

La Saussaz - 73300 Albiez-Montrond



### Sporting activities

With Ludovic, Mountain Guide, discover the valley's most beautiful off-piste skiing for a half-day or a full day... Safety pack (avalanche transceiver, shovel, probe) provided.

☎ 06 13 84 52 77  
arvanvt@gmail.com

From 21/12 to 30/03, daily. Subject to snow conditions. On demand.

## SORTIE ESCALADE SUR GLACE

73300 Albiez-Montrond



### Sporting activities

Discover or perfect ice climbing. In Albiez or elsewhere in the Maurienne, depending on weather conditions, this very special sport, which allows you to climb outdoors in winter, is much more affordable than it sounds!

☎ 06 13 84 52 77  
arvanvt@gmail.com

From 21/12 to 23/03, daily. Subject to favorable weather. On demand.

## ANENA COMPRENDRE LA TRACE RANDO RAQUETTES

MAURIENNE NIV.1 1 JOUR

Place Oninel, Chef-lieu - 73300 Albiez-Montrond



### Sporting activities

ANENA formation, "comprendre la trace en randonnée raquettes", questions about snow, time of day, weather conditions, BERA, comparisons, nivology, snow cover... With Yves Accompagnateur en Montagne à Albiez, ANENA-approved trainer.

One price : **130 €**



06 80 02 13 85

[albiezrandopatrimoine@orange.fr](mailto:albiezrandopatrimoine@orange.fr)

[www.albiezrandopatrimoine.com/](http://www.albiezrandopatrimoine.com/)

From 01/12 to 06/04, daily between 9 am and 4 pm. On demand.

## ANENA SAUVETAGE AVALANCHE MAURIENNE NIV. 1+2 1 JOUR

Place Oninel, Chef-lieu - 73300 Albiez-Montrond



### Sporting activities

ANENA "Sauvetage Avalanche en Autonomie 1+2 1 jour" training course. Ski tourers, snowshoers, off-piste skiers, freeriders and snowboarders, review and use your avalanche transceiver efficiently in all configurations with Yves, ANENA's instructor.

One price : **110 €**

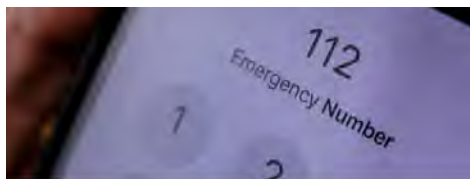


06 80 02 13 85

[albiezrandopatrimoine@orange.fr](mailto:albiezrandopatrimoine@orange.fr)

[www.albiezrandopatrimoine.com/](http://www.albiezrandopatrimoine.com/)

From 23/11 to 06/04, every Saturday and Sunday. Other dates available on request.



## Numéros d'urgences



### NUMÉRO D'APPEL D'URGENCE

EMERGENCY NUMBER

**112**

### CENTRE HOSPITALIER SAINT-JEAN-DE-MAURIENNE (15 KM) :

HOSPITAL

**+33 (0)4 79 20 60 20**

### GENDARMERIE SAINT-JEAN-DE-MAURIENNE :

**+33 (0)4 79 64 00 17**

### SECOURS - SERVICE DES PISTES

**+33 (0)4 79 59 31 81**



### GROUPE MÉDICAL DES ARVES

DOCTORS

**+33 (0)4 73 59 73 71**

### PHARMACIE DES ARVES

PHARMACY

**+33 (0)4 79 59 71 94**

Résidence l'Ouillon, 73300 Saint-Sorlin-d'Arves



### OSTÉOPATHE

OSTEOPATH

**Wilfried GRANGIER**

**+33 (0)7 49 06 14 34**

### MASSEUR KINÉSITHÉRAPEUTE

PHYSIOTHERAPIST

**Corinne POURPRIX & Sophie RAMBAUD**

**+33 (0)6 85 92 32 43**

Résidence O'Mikely, Chemin du Plan de la Fesse

Chef-lieu, 73300 Albiez-Montrond

# Guided Snowshoeing

## DÉCOUVERTE DES PAYSAGES ENNEIGÉS

73300 Albiez-Montrond



### Sporting activities

Discover snow-covered landscapes on snowshoes, immersed in nature. Explore alpine forests and meadows and enjoy their beauty in this unique atmosphere. The tracks in the deep snow will tell you all about the winter life of the animals...

Adult : 30 €

Child : 20 €



07 87 47 06 98

contact@alpexplore.eu

[www.alpexplore.fr](http://www.alpexplore.fr)

From 16/12/2024 to 30/03/2025, every Monday between 1.30 pm and 4.30 pm.

## DÉCOUVERTE DU PLATEAU DES AIGUILLES D'ARVES

Le Chalmieu, Montrond - 73300 Albiez-Montrond



### Sporting activities

Go snowshoeing on the magnificent north face of the Aiguilles d'Arves plateau. We'll make our own tracks in the deep snow to explore winter mountain life and immerse ourselves in this serene atmosphere...

Adult : 30 €

Child : 20 €



07 87 47 06 98

contact@alpexplore.eu

[www.alpexplore.fr](http://www.alpexplore.fr)

From 16/12/2024 to 30/03/2025, every Tuesday between 9.30 am and 12.30 pm.

## UNE JOURNÉE AU PIED DES AIGUILLES D'ARVES

Le Chalmieu, Montrond - 73300 Albiez-Montrond



### Sporting activities

Take a trip further up into the mountains... We'll be able to reach deep snow, surrounded by a magnificent panorama! We'll hike up to an abandoned mountain chalet, ideal for a warm drink and sunny picnic break...

Adult : 55 €

Child : 25 €



07 87 47 06 98

contact@alpexplore.eu

[www.alpexplore.fr](http://www.alpexplore.fr)

From 16/12/2024 to 30/03/2025, every Thursday between 9.30 am and 4.30 pm.

## RANDONNÉE EN RAQUETTE SUR MESURE

73300 Albiez-Montrond



### Sporting activities

Looking for a special snowshoeing itinerary? On Wednesdays, Stefan organizes a customized day out for you! Whether you're on your own, with family or friends, for a half-day, a full day or an overnight stay in a refuge, contact Stefan to let him know what you'd like to do.



07 87 47 06 98

contact@alpexplore.eu

[www.alpexplore.fr](http://www.alpexplore.fr)

From 16/12/2024 to 30/03/2025, every Wednesday.

## LA RANDO DU MOINE ET DU FOUR DU DIABLE

Place Opinel, Chef-lieu - 73300 Albiez-Montrond



### Sporting activities

A beautiful snowshoe hike with Yves, a mountain guide, silent meadows, the Moine de Champlan, picturesque scenery, the Four du Diable and Rosette, who will engrave your first name on a glass of your choice. Hot snack.

Adult : 39 €

Child : 35 €



06 80 02 13 85

[albiezrandopatrimoine@orange.fr](mailto:albiezrandopatrimoine@orange.fr)

[www.albiezrandopatrimoine.com/](http://www.albiezrandopatrimoine.com/)

From 14/12 to 30/04, every Monday between 2 pm and 5 pm. Other dates on request.

## OBSERVATION DES BOUQUETINS DES ALPES

Place Opinel, Chef-lieu - 73300 Albiez-Montrond



### Sporting activities

Just a few metres away, during a short walk suitable for the whole family, discover this wild goat and its goats in their natural environment.

Adult : 35 €

Child : 31 €



06 80 02 13 85

[albiezrandopatrimoine@orange.fr](mailto:albiezrandopatrimoine@orange.fr)

[www.albiezrandopatrimoine.com/](http://www.albiezrandopatrimoine.com/)

From 14/12 to 30/04, every Monday between 2.30 pm and 5.30 pm. Other dates on request.



### RANDO RAQUETTES EN FORÊT

Place Opinel, Chef-lieu - 73300 Albiez-Montrond



#### Sporting activities

The hushed silence of small trails, trees, space, nature in its purest form and a mountain herbal tea. A hike at your own pace. Yves, a mountain guide, will take you on a journey to discover the life of the forest and its inhabitants.

Adult : 35 €

Child : 31 €



06 80 02 13 85

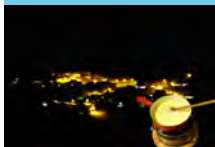
[albiezrandopatrimoine@orange.fr](mailto:albiezrandopatrimoine@orange.fr)

[www.albiezrandopatrimoine.com/](http://www.albiezrandopatrimoine.com/)

From 14/12 to 30/04, every Tuesday between 9 am and 12 pm. Other dates on request.

### LES FONDUES DE LA RAQUETTE

Place Opinel, Chef-lieu - 73300 Albiez-Montrond



#### Sporting activities

Snowshoeing, overnight stays, mulled wine and fondue in the middle of the mountains... All the ingredients are there to make you experience a story full of different sensations. Let yourself be tempted. Hiking with Yves, mountain leader.

One price : 65 €



06 80 02 13 85

[albiezrandopatrimoine@orange.fr](mailto:albiezrandopatrimoine@orange.fr)

[www.albiezrandopatrimoine.com/](http://www.albiezrandopatrimoine.com/)

From 14/12 to 15/05, every Tuesday between 7 pm and 10 pm. Other dates on request.

### RANDO TRAPPEURS EN FORÊT

Place Opinel, Chef-lieu - Albiez-Montrond



#### Sporting activities

The silence, the crunch of footsteps in the snow, little paths or weaving between trees, discovering hidden meadows, footprints, snowshoeing at your own pace. Yves, mountain guide in Albiez. Hot beverage.

Adult : 35 €

Child : 31 €



06 80 02 13 85

[albiezrandopatrimoine@orange.fr](mailto:albiezrandopatrimoine@orange.fr)

[www.albiezrandopatrimoine.com/](http://www.albiezrandopatrimoine.com/)

From 14/12 to 30/04, every Wednesday between 9 am and 12 pm. Other dates on request.

### RAQUETTES FORÊT ET PANORAMA

Place Opinel, Chef-lieu - 73300 Albiez-Montrond



#### Sporting activities

An exceptional panorama, an unspoilt and silent area, a beautiful snowshoe hike, viewpoints to discover and a mountain tea with Yves, a mountain guide in Albiez.

Adult : 35 €

Child : 31 €



06 80 02 13 85

[albiezrandopatrimoine@orange.fr](mailto:albiezrandopatrimoine@orange.fr)

[www.albiezrandopatrimoine.com/](http://www.albiezrandopatrimoine.com/)

From 14/12 to 30/04, every Wednesday between 2 pm and 5 pm. Other dates on request.

### PETITE BALADE GOURMANDE, VISITE DE LA TRAITE

Place Opinel, Chef-lieu - 73300 Albiez-Montrond



#### Cultural activities

On the Route des Fromages de Savoie, discover the mountain agriculture behind the excellent Beaufort cheese, visit the farm at milking time with Yves, a mountain guide in Albiez, meet the farmer and enjoy a tasting.

Adult : 22 €

Child : 18 €



06 80 02 13 85

[albiezrandopatrimoine@orange.fr](mailto:albiezrandopatrimoine@orange.fr)

[www.albiezrandopatrimoine.com/](http://www.albiezrandopatrimoine.com/)

From 14/12 to 30/04, every Wednesday between 5.30 pm and 7.30 pm. Other dates on request.

### LE PANORAMA D'ALBIEZ EN RAQUETTES

Place Opinel, Chef-lieu - 73300 Albiez-Montrond



#### Sporting activities

The pleasure of snowshoeing at your own pace to discover the mountains, the snow-covered area and the Albiez panorama with Yves, a mountain leader in Albiez, with unparalleled views of the village and animal encounters along the way.

Adult : 35 €

Child : 31 €



06 80 02 13 85

[albiezrandopatrimoine@orange.fr](mailto:albiezrandopatrimoine@orange.fr)

[www.albiezrandopatrimoine.com/](http://www.albiezrandopatrimoine.com/)

From 14/12 to 30/04, every Thursday between 9 am and 12 pm. Other dates on request.

### APÉRO ESKIMO AUX FLAMBEAUX

Place Opinel, Chef-lieu - 73300 Albiez-Montrond



#### Sporting activities

Eskimo aperitif by torchlight with Yves, mountain guide. Night, silence, the crunch of snowshoes on the snow, a nocturnal landscape of stars or full moon, the lights of the resort soon fade. At your own pace, tastings.

Adult : 38 €

Child : 34 €



06 80 02 13 85

[albiezrandopatrimoine@orange.fr](mailto:albiezrandopatrimoine@orange.fr)

[www.albiezrandopatrimoine.com/](http://www.albiezrandopatrimoine.com/)

From 14/12 to 30/04, every Thursday between 7.15 pm and 9.15 pm. Other dates on request.

### LES TRACES DES ANIMAUX DE MONTAGNE

Place Opinel, Chef-lieu - 73300 Albiez-Montrond



#### Sporting activities

A footprint, a trace in the snow, clues in the vegetation - who's been there? Yves, a mountain leader in Albiez, will take you on a snowshoe hike at your own pace to find out which animals live at altitude all year round.

Adult : 27 €

Child : 23 €



06 80 02 13 85

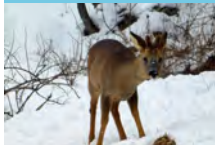
[albiezrandopatrimoine@orange.fr](mailto:albiezrandopatrimoine@orange.fr)

[www.albiezrandopatrimoine.com/](http://www.albiezrandopatrimoine.com/)

From 14/12 to 30/04, every Friday between 9 am and 11 am. Other dates on request.

## OBSERVATION DES CHAMOIS

Place Opinel, Chef-lieu - 73300 Albiez-Montrond



### Sporting activities

Yves, a mountain guide, shares with you his best spots for observing wildlife and its winter landmarks. But let's be discreet!

Adult : 27 €

Child : 23 €



06 80 02 13 85

albiezrandopatrimoine@orange.fr

[www.albiezrandopatrimoine.com/](http://www.albiezrandopatrimoine.com/)

From 14/12 to 30/04, every Friday between 2 pm and 4 pm. Schedules change according to the period. Other dates on request.

## RAQUETTES AU PIED DES AIGUILLES D'ARVES

Place Opinel, Chef-lieu - 73300 Albiez-Montrond



### Sporting activities

On snowshoes with Yves, a mountain leader in Albiez, come and hike in a grandiose setting at the foot of the Aiguilles d'Arves. After a climb in the forest or in the mountain pastures, you'll be treated to an extraordinary panorama.

One price : 82 €



06 80 02 13 85

albiezrandopatrimoine@orange.fr

[www.albiezrandopatrimoine.com/](http://www.albiezrandopatrimoine.com/)

From 14/12 to 30/04, daily between 9 am and 4 pm. On demand.

## PANORAMA DES ARVES, RANDONNÉE RAQUETTES

Place Opinel, Chef-lieu - 73300 Albiez-Montrond



### Sporting activities

One-day snowshoe hike with Yves, mountain leader, with exceptional panoramic views at over 2000 m altitude. On a ridge, we'll see chamois feeding, restaurant meal included. Up/down by chairlift.

One price : 105 €



06 80 02 13 85

albiezrandopatrimoine@orange.fr

[www.albiezrandopatrimoine.com/](http://www.albiezrandopatrimoine.com/)

From 14/12 to 30/04, every Wednesday between 9 am and 4.45 pm. Other dates on request. On demand.

## SOIRÉE TRAPPEUR

47 Route du Mollard, Chef-lieu - 73300 Albiez-Montrond



### Sporting activities

A unique experience! At nightfall, after a shuttle transfer to Paradis Blanc, head off on snowshoes to a cosy chalet for a delicious menu of mulled wine, brazier, raclette and dessert, before setting off again...

Adult : 110 €

Child : 90 €



07 88 43 96 96 / 07 86 34 42 12

mustangalbiez@gmail.com

<https://mustangsport.lokki.rent/>

From 21/12 to 23/03, every Thursday between 6 pm and 10.30 pm.

## BALADE RAQUETTES EN FORÊT AVEC L'ESF

185 Rue du Ravarin, Le Mollard - 73300 Albiez-Montrond



### Sporting activities

Every Tuesday, the ESF takes you snowshoeing in the forest to discover its flora and fauna. Suitable for all levels, this walk will take you off the slopes and into a more intimate world.

One price : 27 €



04 79 59 31 80 / 04 79 59 31 77

contact@esfalbiez.fr

[www.esfalbiez.fr/](http://www.esfalbiez.fr/)

From 06/01 to 23/03, every Tuesday between 3 pm and 5 pm. From 21/12 to 05/01, every Tuesday between 2 pm and 4 pm.

## ÉCHAPPÉE GOURMANDE EN RAQUETTES AVEC L'ESF

Chemin de la Rua, Chef-lieu - 73300 Albiez-Montrond



### Sporting activities

For this outing, you'll be taking a fairly strenuous route, but the rewards will be considerable: after the climb, you'll be able to talk about the habitat and way of life of mountain farmers, and sample some local produce!

One price : 27 €



04 79 59 31 77 / 04 79 59 31 80

contact@esfalbiez.fr

[www.esfalbiez.fr/](http://www.esfalbiez.fr/)

From 06/01 to 23/03, every Thursday between 3 pm and 5 pm. From 21/12 to 05/01, every Thursday between 2 pm and 4 pm.

## PANORAMA ET FAUNE EN RAQUETTES AVEC L'ESF

185 Rue du Ravarin, Le Mollard - 73300 Albiez-Montrond



### Sporting activities

Leave the mountains behind and head for the sub-alpine zone to discover a wilder environment. This snowshoe walk will enable you to observe different species, their habitats and the surrounding geological riches.

One price : 27 €



04 79 59 31 77 / 04 79 59 31 80

contact@esfalbiez.fr

[www.esfalbiez.fr/](http://www.esfalbiez.fr/)

From 06/01 to 23/03, every Wednesday between 3 pm and 5 pm. From 21/12 to 05/01, every Wednesday between 2 pm and 4 pm.

## PACK 3 SORTIES EN RAQUETTES AVEC L'ESF

185 Rue du Ravarin, Le Mollard - 73300 Albiez-Montrond



### Sporting activities

If you love snowshoeing, the ESF offers you a Pack 3 outings: Forest snowshoe walk, Panorama and wildlife walk and Gourmet getaway. Hike, observe, taste, share, discover... Treat yourself to a complete program!

One price : 72 €



04 79 59 31 80 / 04 79 59 31 77

contact@esfalbiez.fr

[www.esfalbiez.fr/](http://www.esfalbiez.fr/)

From 06/01 to 23/03, every Tuesday, Wednesday and Thursday between 3 pm and 5 pm. From 21/12 to 05/01, every Tuesday, Wednesday and Thursday between 2 pm and 4 pm.

# Wellness

## MASSAGE SHIATSU

735 Route du Mollard, Chef-lieu - 73300 Albiez-Montrond



### Services

Shiatsu, a Japanese massage practice, derived from traditional Chinese medicine, soothes, relaxes and rebalances physical and psychological bodily functions. Ideal after a day of skiing or hiking, come quickly and meet Muriel!



06 71 79 99 35

[mu.sculpt@free.fr](mailto:mu.sculpt@free.fr)

One price : 50 €

From 01/12 to 30/04 between 9 am and 7 pm. By appointment only.

## KINESITHERAPEUTES - CORINNE POURPRIX ET SOPHIE RAMBAUD

74 Chemin du plan de la Fesse, Chef-lieu - 73300 Albiez-Montrond



### Services

Corinne Pourprix and Sophie Rambaud welcome you all year round by appointment for therapeutic massages (on prescription) or well-being massages on request.



06 85 92 32 43

From 01/01 to 31/12. Closed on Sunday. By appointment only.

## RAQUETTES EN DOUCEUR ET TISANE SAUVAGE

Place Opinel, Chef-lieu - 73300 Albiez-Montrond



### Sporting activities

Breathe in the fresh air, the nature, the space, the snow, the sun... Yves, a mountain leader, will take you snowshoeing from the heart of the village, in a field of gentle relief and exceptional panoramic views.

One price : 27 €



06 80 02 13 85

[albiezrandopatrimoine@orange.fr](mailto:albiezrandopatrimoine@orange.fr)

[www.albiezrandopatrimoine.com/](http://www.albiezrandopatrimoine.com/)

From 14/12 to 30/04 Opening hours on Monday between 10 am and 12 pm. On Tuesday between 2.30 pm and 4.30 pm. Other dates on request.

## RAQUETTES ET BALNÉO, RANDO JOURNÉE

Place Opinel, Chef-lieu - 73300 Albiez-Montrond



### Sporting activities

A full day to pamper yourself and recharge your batteries, with a beautiful snowshoe hike, breathtaking panoramas in silence with Yves, a mountain guide in Albiez, and a relaxing balneotherapy session (massage optional).

One price : 95 €



06 80 02 13 85

[albiezrandopatrimoine@orange.fr](mailto:albiezrandopatrimoine@orange.fr)

[www.albiezrandopatrimoine.com/](http://www.albiezrandopatrimoine.com/)

From 14/12 to 30/04, daily between 9 am and 6 pm. On demand.

## WE DUO ESKIMO - MOTONEIGE, SPA ET RÉSIDENCE

47 Route du Mollard, Chef-lieu - 73300 Albiez-Montrond



### Sporting activities

Le Mustang offers you a WE of relaxation and sensations, with a package including accommodation in a residence, two breakfasts, access to its private relaxation area (sauna and jacuzzi) and a snowmobile driving session at dusk!

One price : 400 €



07 88 43 96 96 | 07 86 34 42 12

[mustangalbiez@gmail.com](mailto:mustangalbiez@gmail.com)

<https://mustangsport.lokki.rent/>

From 04/01 to 02/02, every Saturday and Sunday. From 08/03 to 23/03, every Saturday and Sunday.



# Shops & services

## BOULANGERIE MOULIN VALENTIN

Route du Mollard, Chef-lieu - 73300 Albiez-Montrond



### Shops

Le Moulin Valentin offers you home-made recipes prepared on site: breads, viennoiseries, sweet tarts... You'll also find hot and cold drinks (non-alcoholic) as well as salads, sandwiches, special breads and desserts.



04 79 59 33 97  
lemoulinvalentin@gmail.com

From 06/01 to 07/02 Opening hours daily between 7.30 am and 12.30 pm and between 4 pm and 6.30 pm. From 08/02 to 09/03 Opening hours daily between 7 am and 1 pm and between 4 pm and 6.30 pm. From 10/03 to 23/03 Opening hours daily between 7.30 am and 12.30 pm and between 4 pm and 6.30 pm.

## ALIMENTATION SAMBUIS DUFRENEY

18 Rue de l'Eglise Saint-Michel, Chef-lieu - 73300 Albiez-Montrond



### Shops

You can find all the daily products in this mini market - food, situated in the center of the village : general food, cooked meats and cheese, grocery, regional products, bread, gas, hardware and first aid.



04 79 59 30 80  
jean-charles.dufreney@wanadoo.fr

From 06/01 to 07/02 Opening hours daily between 8 am and 12.30 pm and between 4.30 pm and 7 pm. From 08/02 to 09/03 Opening hours daily between 8 am and 12.30 pm and between 3 pm and 7 pm. From 10/03 to 23/03 Opening hours daily between 8 am and 12.30 pm and between 4.30 pm and 7 pm.

## SHERPA SUPERMARCHÉ ALBIEZ

107 Rue du Ravarin, Le Mollard - 73300 Albiez-Montrond



### Shops

At the Sherpa mini-market in Le Mollard, you'll find: an attractive butcher's, delicatessen and delicatessen by the slice, regional products, fresh bread... As well as roast chicken on Wednesdays and Sundays, and fresh fish on Thursdays (reservations recommended).



04 79 56 72 21  
albiez@sherpa.net  
[www.sherpa.net/magasins/albiez-montrond](http://www.sherpa.net/magasins/albiez-montrond)

From 06/01 to 07/02 Opening hours daily between 7.30 am and 1 pm and between 3 pm and 7 pm. From 08/02 to 09/03, daily between 7.30 am and 7.30 pm. From 10/03 to 23/03 Opening hours daily between 7.30 am and 7.30 pm.

## FROMAGERIE "AUX PRODUCTEURS SAVOYARDS" - ALBIEZ

54 Place Opinel, Chef-lieu - 73300 Albiez-Montrond



### Shops

The Coopérative des Arves sells local cheeses and products direct from the farm: Beaufort, tommes, reblochons, eggs, jams, honeys, fruit juices, charcuterie, wines... Fondue and raclette preparation by prior arrangement.



04 79 05 04 85  
sica@beaufortdesarves.com  
[www.beaufortdesarves.com](http://www.beaufortdesarves.com)

From 05/07 to 31/08 Opening hours daily between 9.30 am and 12.30 pm and between 4 pm and 7 pm. From 21/12 to 23/03 Opening hours daily between 9.30 am and 12 pm and between 4 pm and 7 pm.

## BAR TABAC CONSTANTIN

26 Rue de l'Eglise Saint-Michel, Chef-lieu - 73300 Albiez-Montrond



### Shops

At the Bar Tabac Constantin, holidaymakers, seasonal workers and locals alike enjoy a drink or a Savoyard fondue, either inside or on the terrace. Bar, tabac, Française des jeux, postcards, IGN maps, souvenirs... A place not to be missed!



04 79 59 30 16

All year round between 7.30 am and 11 pm.

## CENTRE DE LOISIRS - LE PETIT MONTAGNARD

Place Opinel, Chef-lieu - 73300 Albiez-Montrond



### Services

Le Petit Montagnard leisure center offers a wide range of activities and events during the school vacations, defined within the framework of an educational project. Children aged 4 to 12 are welcome for full or half days.



04 79 59 39 33  
enfance@albiez-montrond.fr

From 07/07 to 14/08 Opening hours on Monday and Friday between 9 am and 12.30 pm and between 2 pm and 5.30 pm. On Tuesday, Wednesday and Thursday between 8.30 am and 5.30 pm. Closed on Saturday and Sunday.

## HALTE-GARDERIE - LE CHAT PERCHÉ

37 Place Opinel, Chef-lieu - 73300 Albiez-Montrond



### Services

The "Le Chat Perché" day nursery offers regular and occasional care in winter and summer for children aged 3 months to 6 years. A qualified team welcomes them in a playful, secure and well-equipped space, both inside and out.



☎ 04 79 59 39 33  
enfance@albiez-montrond.fr

From 25/03 to 12/04, every Monday, Tuesday and Thursday between 8.30 am and 5.30 pm. Closed exceptionally on Easter Monday. From 29/04 to 05/07, every Monday, Tuesday and Thursday between 8.30 am and 5.30 pm. From 12/07 to 19/08, every Monday, Tuesday and Thursday between 8.30 am and 5.30 pm.

## JEANNOT K'DO - RELAIS OPINEL

94 Place Opinel, Chef-lieu - 73300 Albiez-Montrond



### Shops

Looking for a gift? Jeannot K'do offers a selection of Albiez souvenirs, including a wide range of Opinel knives, as well as children's games, home decor and mountain-style linen, jewelry...



☎ 06 30 23 22 16  
go.albiez@orange.fr

From 07/07 to 31/08 Opening hours daily between 10 am and 12.30 pm and between 3 pm and 7 pm. From 20/12 to 22/03 Opening hours daily between 10 am and 12.15 pm and between 3 pm and 6.45 pm.

## AUX DEUX FRÈRES - SOUVENIRS

20 Route des Arves, Le Mollard - 73300 Albiez-Montrond



### Shops

The 80 m² Aux Deux Frères boutique offers a wide choice of gifts and souvenirs: wooden objects, home decor, crockery, costume jewelry, books, children's games... and a large selection of Opinel. An open-access bookshop is also available.



☎ 04 79 59 31 06  
auxdeuxfreres.sport2000@orange.fr

From 21/12 to 23/03 Opening hours on Tuesday, Wednesday, Thursday, Friday and Saturday between 9 am and 12 pm and between 3 pm and 7 pm. Closed Monday and Sunday.

## INTERSPORT JIMMY SHOP SB

Rue du Ravarin, Le Mollard - 73300 Albiez-Montrond



### Shops

The Intersport Jimmy Shop SB at the foot of the Mollard slopes offers a large sales and rental area. You'll find everything you need for downhill or touring skiing, snowboards, snowscoots, snowshoes, sledges...

☎ 06 09 80 45 6704 79 59 32 25  
jimmygorre@gmail.com  
[www.intersport-albiez.com](http://www.intersport-albiez.com)

From 21/12 to 23/03 between 9 am and 7 pm.

## MUSTANG SKIMIUM 1550

47 Route du Mollard, Chef-lieu - 73300 Albiez-Montrond



### Shops

The Mustang Skimium 1550 store offers a wide range of skis, snowboards, sledges, snowshoes, bikes and TAE scooters for hire or sale. As well as a repair and bootfitting service, press, souvenirs and regional products...

☎ 07 88 43 96 96  
mustangalbiez@gmail.com  
<https://mustangsport.lokki.rent/>

From 01/09 to 08/12, daily. On request. From 09/12 to 31/03, daily between 9 am and 7 pm.

## MUSTANG SKI SET 1650

Rue du Ravarin, Le Mollard - 73300 Albiez-Montrond



### Shops

The brand-new Mustang Ski Set 1650 store offers a wide range of AE skis, snowboards, sledges, snowshoes, bikes and scooters for hire or sale. As well as a repair and bootfitting service, press, coffee and souvenirs.

☎ 07 86 34 42 12  
mustangalbiez1650@gmail.com  
<https://albiez-sports.notresphere.com/>

From 21/12 to 23/03 between 8.30 am and 7 pm.

## SPORT 2000 AUX DEUX FRÈRES

Rue du Ravarin, Le Mollard - 73300 Albiez-Montrond



### Shops

Go quickly skiing in Albiez at your arrival by reserving your ski now! Ski equipment rent or sale. Sport equipment and accessories. Sportwear shop.



☎ 04 79 59 30 94  
auxdeuxfreres.sport2000@orange.fr  
<https://auxdeuxfreres.sport2000.fr/>

From 16/12 to 17/12, daily between 9 am and 7 pm. From 21/12 to 23/03, daily between 8.30 am and 7 pm.

## AGENCE ALBIEZ IMMOBILIER

18 Place Opinel, Chef-lieu - 73300 Albiez-Montrond



### Services

Looking for an apartment, land, house or commercial space... To buy or sell, contact Albiez Immobilier. The agency also offers a sheet rental service for individuals.

☎ 04 79 59 79 36  
info@albiez-immobilier.com  
[www.albiez-immobilier.com](http://www.albiez-immobilier.com)

From 08/07 to 25/08 Opening hours on Monday, Tuesday, Thursday and Friday between 10 am and 12 pm and between 2 pm and 6 pm. From 04/09 to 05/07, every Monday, Tuesday, Thursday and Friday. By



## NAVETTE SAINT-JEAN-DE-MAURIENNE <-> ALBIEZ-MONTROND 73300 Albiez-Montrond



### Services

The regular S33 service runs from Saint-Jean-de-Maurienne to Albiez-Montrond during the winter season (and the rest of the school year). Shuttles run one to three times a day. Reservations required 48 hours in advance.



04 79 56 24 68 | 04 80 00 70 00

<https://booking.fairesavoie.fr/fr/mon-voyage/saint-jean-de-maurienne/selec-tion>

From 24/03 to 06/07, Closed Saturday and Sunday. From 02/09 to 20/12, Closed Saturday and Sunday. From 21/12 to 23/03, daily.

## TAXI LA RUA

Chemin de la Rua, Chef-lieu - 73300 Albiez-Montrond



### Services

La Rua Taxi organises your transfer between the valley and Albiez : train station, airport and station. Capacity of 4 people. Certified CPAM.



06 23 53 76 78

All year round.

## L'ENTRE-POTS

Place du Village - 73300 Albiez-le-Jeune



### Shops

A great associative coffee in the center of the village, to have an exchange and convivial time. It's also a point of sale for local and savoyards producers.

lentrepotdalbiez@gmail.com

All year round, every Thursday between 4 pm and 7 pm.

## AGENCE POSTALE

Chef-lieu - 73300 Albiez-le-Jeune



LA POSTE

### Services

A proximity service for all the postal operations.



04 79 59 92 85 | 09 77 56 92 85

ap.albiez-le-jeune@laposte.fr

All year round Opening hours on Monday, Tuesday and Friday between 8.30 am and 11.30 am and between 1.30 pm and 5.30 pm. On Thursday between 8.30 am and 11.30 am and between 1.30 pm and 6.30 pm.

## Library

In the old school of Albiez, the library volunteers welcome you all year round to allow you to borrow books for free.

During the library's closing hours, you can return your borrowed books to the tourist office.

Opening dates	Opening days	Opening hours
December 22 to January 5	Open every Monday, Wednesday, Friday and Saturday	From 5pm to 6:30 pm
January 6 to February 7	Open every Monday, Wednesday and Saturday	From 5pm to 6:30 pm
February 8 to March 9	Open every Monday, Wednesday, Friday and Saturday	From 5pm to 6:30 pm
March 10 to 23	Open every Monday, Wednesday and Saturday	From 5pm to 6:30 pm



Address : Mairie d'Albiez-Montrond



biblioalbiez@orange.fr

Rue de l'Église Saint-Michel  
Chef-lieu | 73300 | Albiez-Montrond



**Du 21 décembre 2024 au 7 février 2024 et du 8 mars au 21 mars 2025**  
**From December 21, 2024 to February 7, 2025 and from March 8 to March 21, 2025**

### TOUS LES JOURS - EVERY DAY

#### Matin / Morning

La Vernette	08:40	09:20	10:00	10:40	11:20	Pause	12:40
Base de Loisirs	08:42	09:22	10:02	10:42	11:22		12:42
Le Grand Loup	08:43	09:23	10:03	10:43	11:23		12:43
Office de Tourisme	08:45	09:25	10:05	10:45	11:25		12:45
Cinéma	08:47	09:27	10:07	10:47	11:27		12:47
Pierre Vignet	08:48	09:28	10:08	10:48	11:28		12:48
Col du Mollard	08:50	09:30	10:10	10:50	11:30		12:50
Le Mollard - Front de neige	08:51	09:31	10:11	10:51	11:31		12:51

Le Mollard - Front de neige	09:00	09:40	10:20	11:00	11:40	Pause	13:00
La Chapelle	09:01	09:41	10:21	11:01	11:41		13:01
Col du Mollard	09:03	09:43	10:23	11:03	11:43		13:03
Pierre Vignet	09:05	09:45	10:25	11:05	11:45		13:05
Cinéma	09:06	09:46	10:26	11:06	11:46		13:06
Office de Tourisme	09:08	09:48	10:28	11:08	11:48		13:08
Le Grand Loup	09:09	09:49	10:29	11:09	11:49		13:09
Base de Loisirs	09:11	09:51	10:31	11:11	11:51		13:11
La Vernette	09:13	09:53	10:33	11:13	11:53		13:13

#### Après-midi / Afternoon

La Vernette	13:20	14:00	14:40	15:20	16:00	16:40	17:20
Base de Loisirs	13:22	14:02	14:42	15:22	16:02	16:42	17:22
Le Grand Loup	13:23	14:03	14:43	15:23	16:03	16:43	17:23
Office de Tourisme	13:25	14:05	14:45	15:25	16:05	16:45	17:25
Cinéma	13:27	14:07	14:47	15:27	16:07	16:47	17:27
Pierre Vignet	13:28	14:08	14:48	15:28	16:08	16:48	17:28
Col du Mollard	13:30	14:10	14:50	15:30	16:10	16:50	17:30
Le Mollard - Front de neige	13:31	14:11	14:51	15:31	16:11	16:51	17:31

Le Mollard - Front de neige	13:40	14:20	15:00	15:40	16:20	17:00	17:40
La Chapelle	13:41	14:21	15:01	15:41	16:21	17:01	17:41
Col du Mollard	13:43	14:23	15:03	15:43	16:23	17:03	17:43
Pierre Vignet	13:45	14:25	15:05	15:45	16:25	17:05	17:45
Cinéma	13:46	14:26	15:06	15:46	16:26	17:06	17:46
Office de Tourisme	13:48	14:28	15:08	15:48	16:28	17:08	17:48
Le Grand Loup	13:49	14:29	15:09	15:49	16:29	17:09	17:49
Base de Loisirs	13:51	14:31	15:11	15:51	16:31	17:11	17:51
La Vernette	13:53	14:33	15:13	15:53	16:33	17:13	17:53

Téléchargez  
l'application  
ZenBus :

App Store



Android



Bout de ligne  
End of the line

## TOURIST OFFICE



### ALBIEZ

Monday to Sunday, 9am to 12.30pm and 2pm to 6pm



+33 (0)4 79 59 30 48



[albiez@montagnicimes.com](mailto:albiez@montagnicimes.com)



16 Place Opinel  
73300 | Albiez-Montrond



### SAINT-JEAN-DE-MAURIENNE

Monday to Saturday, 9am to 12.30pm and 2pm to 5pm



+33 (0)4 79 83 51 51



[info@montagnicimes.com](mailto:info@montagnicimes.com)



23 Place de la Cathédrale - Ancien Évêché  
73300 | Saint-Jean-de-Maurienne